



Arizona Adverse Childhood Experiences Consortium

## FUNDING FOR RESILIENT SCHOOLS

1

## WHO WE ARE



The Resilience Coordinating Council of AZ supports the wellness of our teachers, staff, and schools to create a happy, healthy, and safe place for our children

**“We must acknowledge that we are ALL impacted by ACEs. Therefore, as people and organizations, we need to be RESPONSIVE to trauma.”**

- Resilience Coordinating Council

2

## HOW TRAUMA AND ADVERSITY IMPACTS SCHOOL COMMUNITIES

Teacher retention

Student learning  
gaps/state test  
scores

Student conduct/  
suspensions/  
absences

3

## IMPACTS IN ARIZONA

AZ SPECIFIC IMPACT	
17%	Students who reported experiencing a major depressive (MDE) episode (MHA, 2023)
56%	Students who experience MDE <b>did not</b> receive treatment (MHA, 2023)
66%	Youth with untreated mental illness <b>do not</b> advance to college (MHA, 2023)
22%	Current rate of chronic absenteeism (Helios, ADE 2021)
25%	Of students reported missing school because they felt unsafe (AYS, 2022)

MHA, 2023

▶ <https://www.mhanational.org/issues/2023/mental-health-america-youth-data>

Helios and ADE, 2021

▶ [https://www.helios.org/media/zeckn0xp/brief-az-chronic-absence-report\\_final-draft\\_with-appendix\\_proofed.pdf](https://www.helios.org/media/zeckn0xp/brief-az-chronic-absence-report_final-draft_with-appendix_proofed.pdf)

AYS 2022

▶ [https://www.azcjc.gov/Portals/0/Documents/pubs/AYSReports/2022/AYS\\_2022%20State\\_Report\\_FINAL\\_09072022.pdf](https://www.azcjc.gov/Portals/0/Documents/pubs/AYSReports/2022/AYS_2022%20State_Report_FINAL_09072022.pdf)

4

## HOW IS THE RESILIENCE COORDINATING COUNCIL SUPPORTING SCHOOLS?

With support from Vitalyst Health Foundation, the AZ ACEs Consortium established the *Resilience Coordinating Council* to engage leaders and community members statewide to develop, disseminate, and implement collaborative strategies to:



5

### WE ARE A CROSS-SECTOR COLLABORATIVE

AZ ACEs Consortium

Vitalyst Health Foundation

Arizona Department of Health Services

Arizona Department of Education

AHCCCS

Community Stakeholders across Arizona

6

**Implementation of a trauma-responsive approach is an ongoing organizational paradigm shift in knowledge, perspective, attitudes, skills, and practices that deepen over time.**

- **Support** from District Leadership, School Board, and School Leadership
- Developing meaningful **relationships** with students, staff, and the broader community
- **Collaborative** leadership and teamwork of the entire staff is crucial
- **Coordinated** approach to student and staff support and well-being across a range of physical and mental health needs
- Engaging student and family **“voice and choice”** in developing trauma responsive policies and environments
- Staff **education** on neurobiology, adversity, collective trauma, self-regulation and resilience
- Implement evidence informed strategies to **mitigate** the impact of toxic stress- e.g. exercise, nutrition, mindfulness, interacting with nature, and calming spaces
- Integrate history and culture into staff education, policy, and practice
- Increase supports and **wellness resources for staff**

7

## **OUR VISION**

**Through braided funding sources, all AZ schools have the desire, support, and funding to ensure full implementation of trauma responsive and resilient policies and practices.**

8

## FUNDING OPPORTUNITIES

Funding is vital to providing meaningful services to Arizona schools, staff, students, and communities



9

## STATEWIDE OPPORTUNITIES

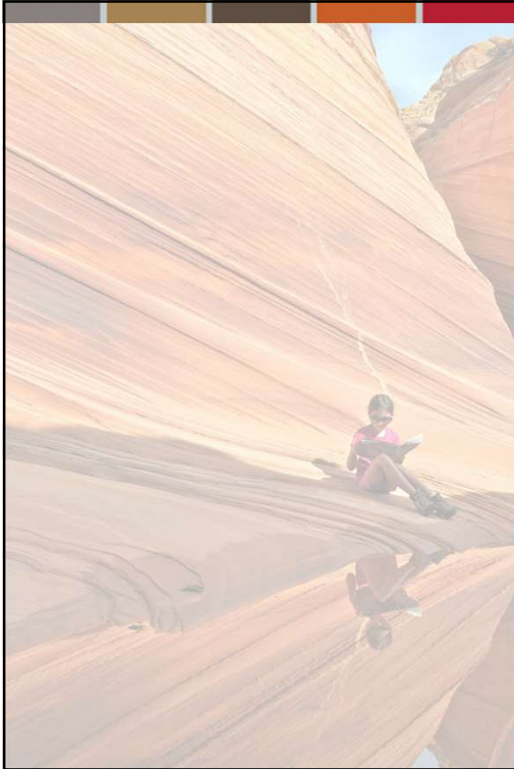
Arizona ACEs Consortium- Training; Facilitating interagency strategies

Arizona Department of Education- Webinars on their website

ESSR Funds- Elementary & Secondary School Emergency Relief Fund

Substance Abuse and Mental Health Services Administration (SAMHSA), Center for Mental Health Services (CMHS)- Cooperative Agreements for School-Based Trauma-Informed Support Services and Mental Health Care for Children and Youth (Short Title: Trauma-Informed Services in Schools)- FY23

10



## **OPPORTUNITIES FOR TRIBAL NATIONS**

### **ADE School Health and Safety Team- Supporting Pinon Unified School FY18-23**

Implementing the CDC Whole School, Whole Community, Whole Child (WSCC) Model which is a student-centered, unified, and collaborative approach designed to improve learning and health in schools.

11

## **SCHOOL DISTRICT OPPORTUNITIES**

**Professional  
development  
funds**

**Title I funds**



12



## NORTHERN ARIZONA RESOURCES

### Coconino County

- **Building Community, LLC**- Providing consultations, facilitation, and professional development for a service fee
- **Coconino Coalition for Children and Youth**- Membership dues and grants fund no-cost webinars and virtual training tailored to organizational needs; Facilitating interagency strategies.
- **Coconino County Education Service Agency (CCESA)**- ESSER funds FY22-25 Providing training and coaching to Coconino districts and schools at no cost
- **Coconino County Public Health Services District- Strong As One**- Youth Mental Health First Aid
- **Flagstaff Unified School District**- Funding school-based counselors and Restorative Practices
- **Native Americans for Community Action**- Mental Health First Aid and suicide prevention work

### Northern Arizona

- **SAMHSA(US DHHS) FY20-25**- All students eligible for Medicaid can receive behavioral health services within the school setting at no cost. Contact: Sarah Hester [sarah.hester@healthchoiceaz.com](mailto:sarah.hester@healthchoiceaz.com) or 913.206.5911.

13

## CENTRAL ARIZONA RESOURCES

- **ADE School Health and Safety Team**- Supporting Glendale school district FY18-23- Implementing the CDC Whole School, Whole Community, Whole Child (WSCC) Model- Student-Centered, unified and collaborative approach designed to improve learning and health in schools.
- **AZ ACEs Consortium**- Funding for Resilience Empowerment Project through Maricopa Department of Public Health- <https://azaces.org/Maricopa>
- **SAMHSA(US DHHS) FY20-25**- All students eligible for Medicaid can receive behavioral health services within the school setting at no cost. Contact [grants@mercyare.org](mailto:grants@mercyare.org) or 480.825.3311

14

## SOUTHERN ARIZONA RESOURCES

- **ADE School Health and Safety Team-** Supporting Sunnyside Unified school district FY18-23- Implementing the CDC Whole School, Whole Community, Whole Child (WSCC) Model- Student-Centered, unified and collaborative approach designed to improve learning and health in schools.
- **ASU School of Social Work-** Promoting culturally centric, trauma-informed, and resilience-building health interventions.
- **National Center for Community Health and Resiliency/ ASU Center for resilient Families (FY21-24)-**
  1. For community health care workers: Specialized training to deliver culturally responsive interventions to children and families experiencing traumatic stress.
  2. Study- Creating national performance indicators, conducting special studies, and providing technical assistance for 68 sites. Researchers will examine how the interventions by community health workers were implemented and will recommend practices and policies for improvements.
- **SAMHSA(US DHHS) FY20-25-** All students eligible for Medicaid can receive behavioral health services within the school setting at no cost. Elizabeth Barry [ebarry@azcompletehealth.com](mailto:ebarry@azcompletehealth.com) or 520.809.6531

15

## Campaign for Trauma-Informed Policy & Practice [advocacy@ctipp.org](mailto:advocacy@ctipp.org)

### GRANTS

Federal Grants  
related to  
addressing  
trauma for:

- State entities

- County entities

- 501c3 entities

- Tribal Nations

- Institutes of  
Higher Education

16



## NEXT STEPS - CALL TO ACTION

Complete a trauma-sensitive self-assessment:  
<https://dpi.wi.gov/sspw/mental-health/trauma/evaluation>

For webinars and resources visit:

1. <https://azaces.org>
2. <https://www.azed.gov/improvement/trauma-sensitive>
3. <https://coconinokids.org>

Contact an organization in your area named in this presentation to request consultation, training, and program support.

***Join the AZ ACEs Consortium!***

17

## SOME OF THE AZ SCHOOLS ALREADY DOING THE WORK

### Northern:

- ✓ FUSD Killip Elementary
- ✓ FUSD Summit High School
- ✓ Pinon Unified School

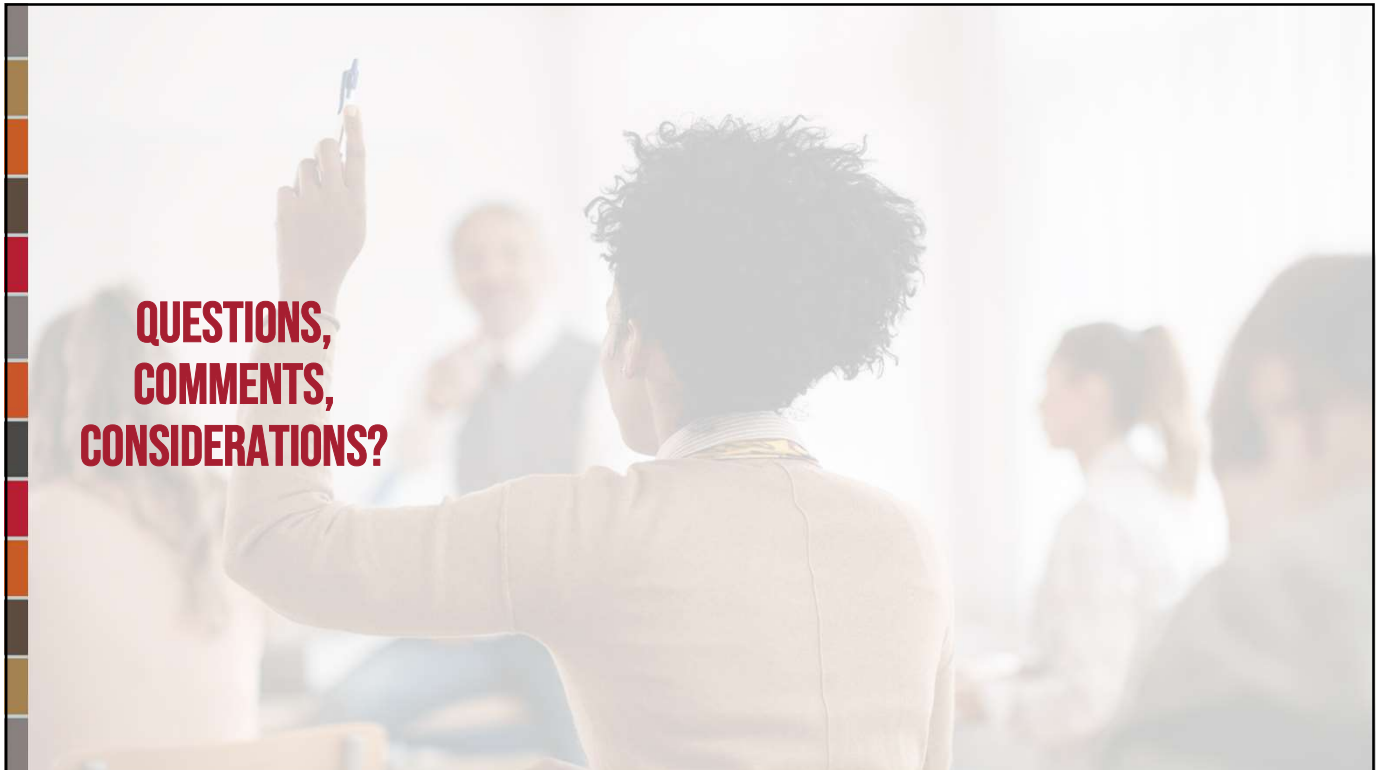
### Central:

- ✓ Glendale, Mesa, Phoenix, Balsz Elementary and Madison School Districts
- ✓ Tempe Union High School District (2 schools)
- ✓ AZ State School for the Deaf and the Blind
- ✓ Numerous charter schools

### Southern:

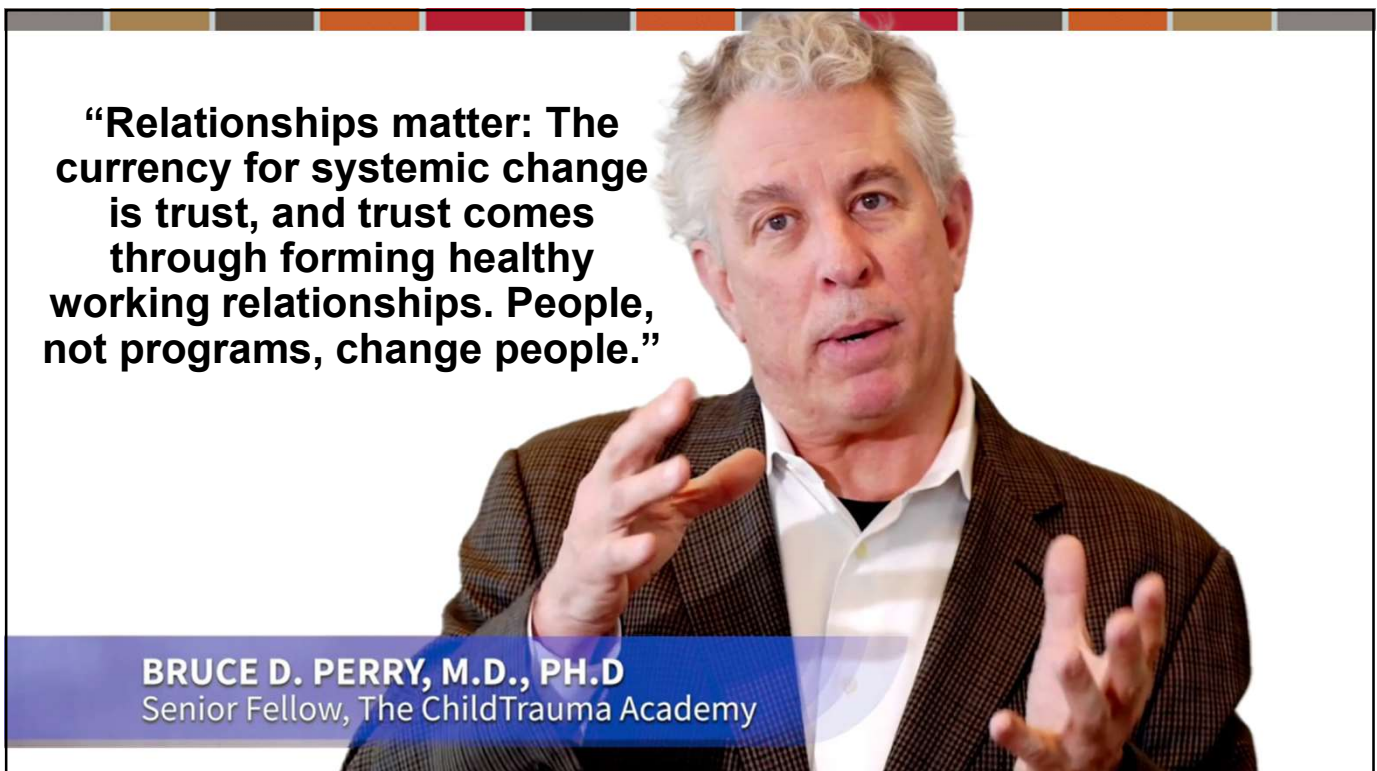
- ✓ Sunnyside Unified School District

18



**QUESTIONS,  
COMMENTS,  
CONSIDERATIONS?**

19



**“Relationships matter: The  
currency for systemic change  
is trust, and trust comes  
through forming healthy  
working relationships. People,  
not programs, change people.”**

**BRUCE D. PERRY, M.D., PH.D**  
Senior Fellow, The ChildTrauma Academy

20

# THANK YOU

CONTACT INFO FOR PRESENTER OR ORG CAN GO HERE.

EMAIL  
PHONE  
URL



Learn more at [AZACES.org/Resilient-Schools](https://AZACES.org/Resilient-Schools)